

April 2025. 07 Apr 2025 - 04 May 2025

Footfall Report for: Cardiff City Centre - New

Weeks This Month: 4
Weeks Last Month: 5

Monthly Footfall Counts

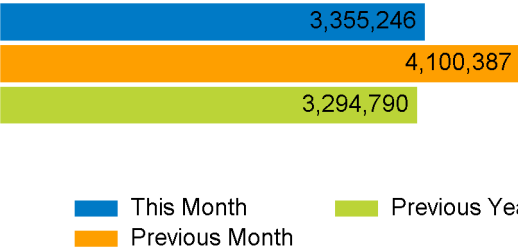
	Year to date % YoY		This month % YoY		This month % MoM	
	2025	2024	2025	2024	2025	2024
Cardiff City Centre - New	1.0%		1.8%		2.3%	-1.8%
Wales	1.0%	-5.4%	2.8%	-6.6%	3.9%	2.1%
UK	1.4%	-1.1%	3.5%	-2.3%	4.6%	4.0%

Benchmark calculations (Year on Year and Month on Month) have been calculated using like for like data sets (only those counters available in both comparison periods) to ensure statistical accuracy

Headlines

- The total number of visitors for the year to date is 13,975,690 which is 1% up on the previous year.
- The total number of visitors to Cardiff City Centre - New in month commencing 7 April 2025 was 3,355,246.
- The busiest day in month commencing 7 April 2025 was Saturday 12 April with 193,414 visitors.
- The peak hour of the month was 13:00 on Saturday 19 April 2025 with footfall of 19,918.

Footfall Counts by month



Figures shown below are calculated using monthly totals.

Weather

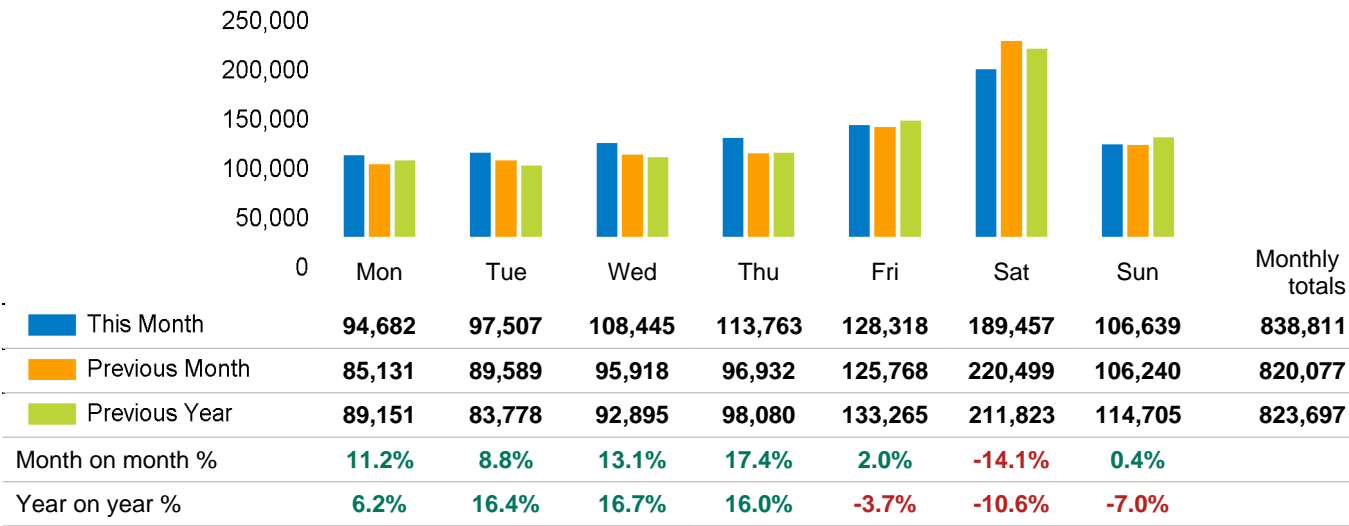
Number of days this month	21	6	1	
Number of days same month last year	11	17		
Number of days same month two years ago	10	7	9	2

Average temperature

	Maximum temperature	Minimum temperature
2025	18°	6°
2024	15°	6°
2023	14°	7°

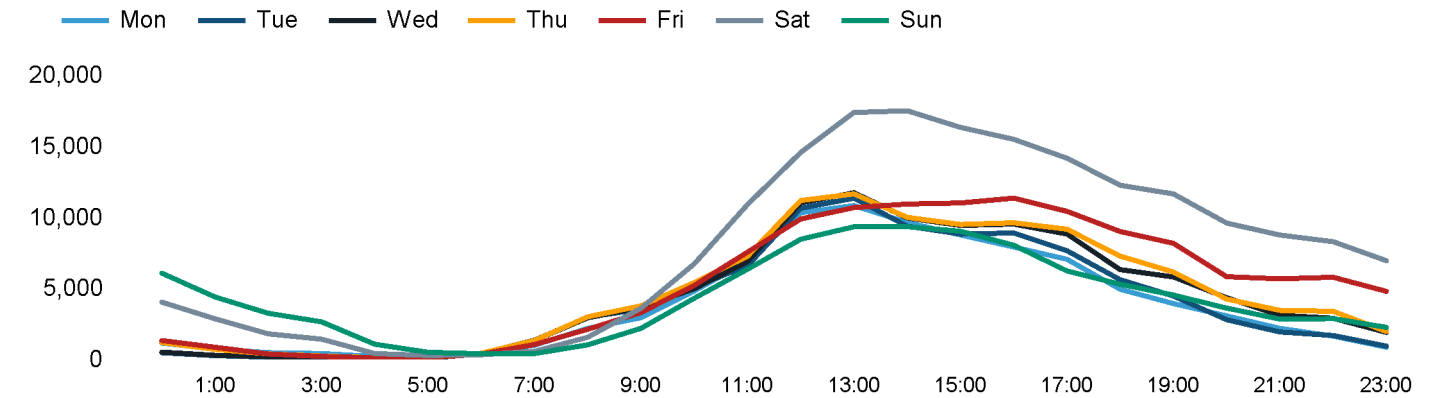
Footfall Counts by day

The figures shown below are calculated using weekly averages.



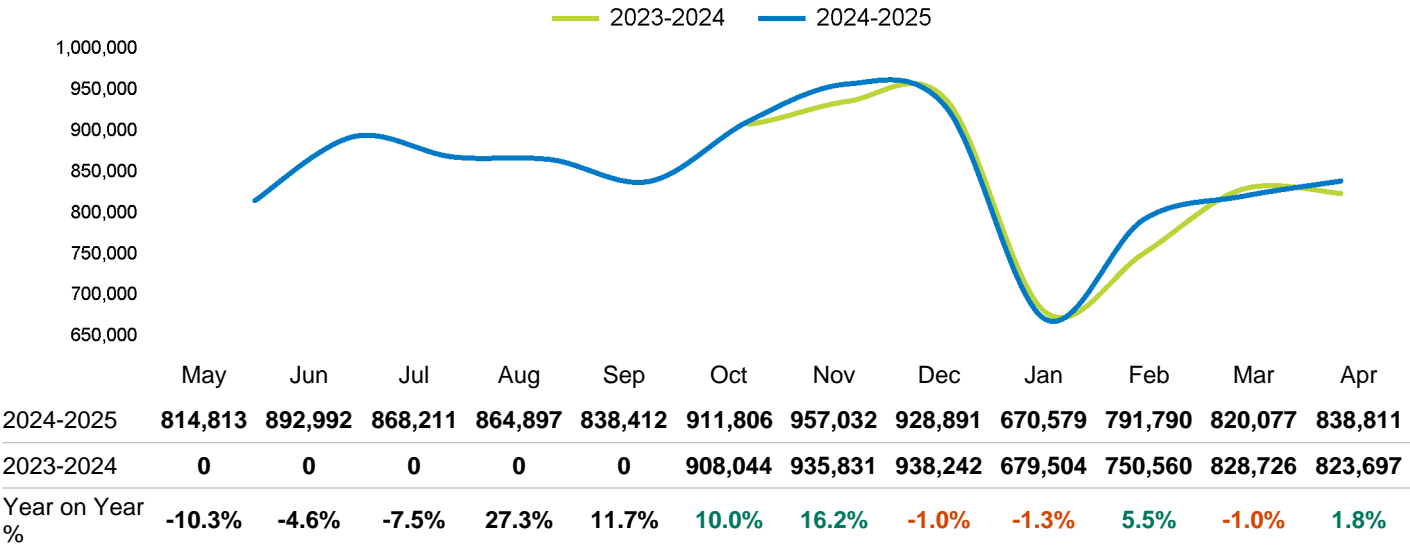
Footfall Counts by hour

The figures shown below are calculated using a weekly average



Footfall Counts - rolling 12 months

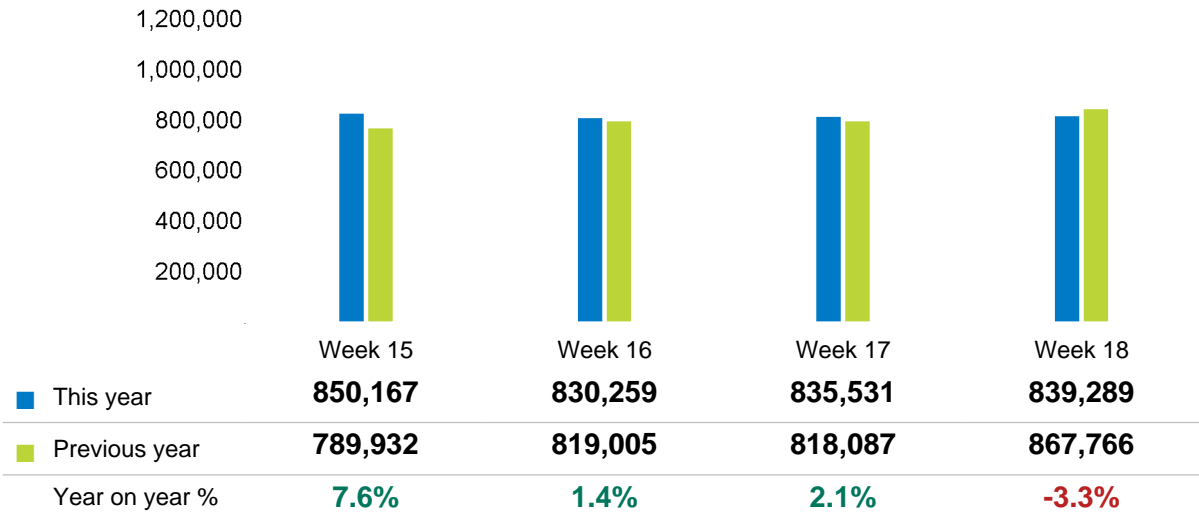
The figures shown below are calculated using weekly averages.



Year on year % is calculated by comparing the 2024-2025 period with the 2023-2024 period i.e the figure for April compares April 2025 to April 2024

Footfall Counts by week of month

The figures shown below are calculated using weekly totals.



Footfall Counts by location

The figures shown below are calculated using weekly averages.

	This month	% share of total month	Previous month	Previous year	Month on month %	Year on year %	<div> <div>This month</div> <div>Previous month</div> <div>Prev Year</div> </div>
Greyfriars Road at Greyfriars Place, Eastbound	7,038	0.8%	7,456	8,104	-5.6%	-13.2%	<div> <div></div> <div></div> <div></div> </div>
Greyfriars Road at Greyfriars Place, Westbound	8,932	1.1%	9,541	9,961	-6.4%	-10.3%	<div> <div></div> <div></div> <div></div> </div>
High Street Arcade at High Street, Eastbound	11,819	1.4%	12,139	12,130	-2.6%	-2.6%	<div> <div></div> <div></div> <div></div> </div>
High Street Arcade at High Street, Westbound	12,189	1.5%	11,858	11,884	2.8%	2.6%	<div> <div></div> <div></div> <div></div> </div>
High Street at Quay Street, Northbound	54,989	6.6%	54,763	48,881	0.4%	12.5%	<div> <div></div> <div></div> <div></div> </div>
High Street at Quay Street, Southbound	52,635	6.3%	50,458	44,288	4.3%	18.8%	<div> <div></div> <div></div> <div></div> </div>
Queen Street at Queen's Arcade, Eastbound	102,017	12.2%	99,899	99,642	2.1%	2.4%	<div> <div></div> <div></div> <div></div> </div>
Queen Street at Queen's Arcade, Westbound	110,069	13.1%	108,979	108,119	1.0%	1.8%	<div> <div></div> <div></div> <div></div> </div>
St Mary Street at Caroline Street, Northbound	64,189	7.7%	63,101	68,770	1.7%	-6.7%	<div> <div></div> <div></div> <div></div> </div>
St Mary Street at Caroline Street, Southbound	70,800	8.4%	71,302	77,312	-0.7%	-8.4%	<div> <div></div> <div></div> <div></div> </div>
St Mary Street at Wharton Street, Northbound	75,853	9.0%	75,697	75,122	0.2%	1.0%	<div> <div></div> <div></div> <div></div> </div>
St Mary Street at Wharton Street, Southbound	79,658	9.5%	78,220	79,228	1.8%	0.5%	<div> <div></div> <div></div> <div></div> </div>
The Hayes at Barry Lane, Northbound	91,046	10.9%	85,239	86,833	6.8%	4.9%	<div> <div></div> <div></div> <div></div> </div>
The Hayes at Barry Lane, Southbound	97,572	11.6%	91,422	93,419	6.7%	4.4%	<div> <div></div> <div></div> <div></div> </div>

Reporting dates

This month - 07 April 2025 - 04 May 2025

Year to Date % Change is the annual % change in footfall from January of this year compared to the same period last year. January, 2025 to April , 2025 Vs January, 2024 to April , 2024

Year on Year % Change is the % change in footfall for this month compared to the same week in the previous year. April, 2025 Vs April, 2024

Month on Month % Change is the % change in footfall for this Month from the previous Month. 4 2025 Vs 3 2025